

Harrison County Regional Sewer District

General Update

March 7, 2016

Overview

- I. Introductions & Housekeeping
 - HCRSD Board Members
 - HCRSD Support
- II. Mission Statement
- III. History
- IV. Local Municipalities & Utilities – Working Together
- V. Stormwater Initiatives
- VI. Sanitary Sewer Initiatives
- VII. New Salisbury Project
- VIII. Lanesville Interchange
- IX. Questions & Answers

HCRSD Board Members

- Tom Tucker, President (Commissioner Appointee)
- Gary Davis, V.P./Treasurer (Council Appointee)
- Jim Klinstiver (Commissioner Appointee)
- Dan Lee, P.E. (Council Appointee)
- Tony Combs, Secretary (Board of Health Appointee)
- Darin Duncan, P.E. (Commissioner Appointee)
- John Kintner (Town of Corydon)*
- Chris Shultz (Town of Lanesville)
- Bill Byrd (Town of Milltown)

* Current Town Voting Member

HCRSD Support

- Program Manager

- Heritage Engineering & Stantec (Bob Woosley/Rob Huckaby)

- Contract WWTP Operator

- Aqua Utility Services (Steve Tolliver)

- Board Attorney

- Chris Byrd

- Rate Consultant

- Umbaugh & Associates (Scott Miller)

Mission Statement

The following dual missions will be accomplished under the direction of the RSD Board of Trustees in collaboration with other community stakeholders as appropriate.

Wastewater

- Reduce pollution, promote public health and safety, and support residential, commercial, and industrial development in Harrison County by providing for the collection, treatment, and safe disposal of wastewater. The RSD may construct and operate sanitary sewer systems or contract with other entities as needed to reduce failing or inadequate systems.

Stormwater

- Reduce the threat of pollution, erosion, and flooding by establishing requirements, standards, and regulations for managing the quantity and quality of stormwater runoff entering Harrison County's watersheds. The RSD may construct drainage improvement facilities as needed. Specific plans will be developed for managing the quantity and quality of stormwater runoff on an individual watershed basis.

History

- Sept. 2005: HCRSD established by Order from IDEM
- Jan/Apr.06: Board Appointments made.
- April 2006: HCRSD kick-off meeting.
- May 2006: Board Officers Selected. 205(j) Grant Kick-off
- Sept. 2007: MOU signed w/Corydon for Medical Campus flows.
- Mar. 2008: Indian Creek Study (205(j)) completed.
- April 2008: District acquired Berkshire WWTP.
- July 2008: Indian Creek Study formally accepted by IDEM.
- July 2008: Medical Campus becomes customer.
- Nov. 2009: New Salisbury owners vote in favor of sewers.
- Sept. 2011: District secures EDA Grant.

History

- Sept 2011: EDA Grant awarded for New Sals.
- Nov/Dec 2012: Received title work clearance from EDA to allow project bidding to proceed.
- Sept 2012: Stormwater Demonstration Projects funded by County.
- Dec 2012: Lanesville Interchange Project funded by County.
- June 2014: New Salisbury sewer construction completed.
- Aug 2015: Lanesville Interchange Sewer Project completed.

Local Municipalities/Utilities – Working Together

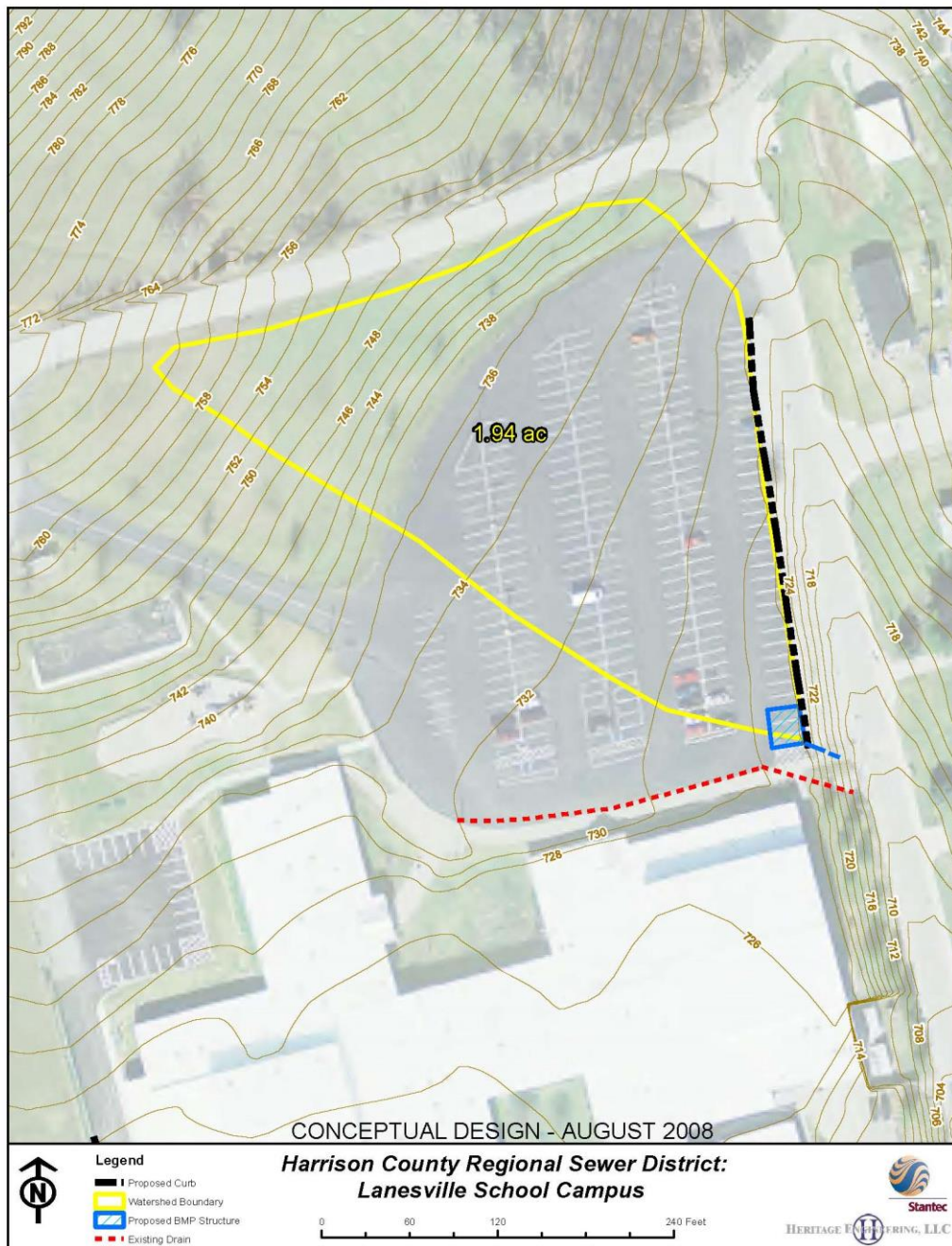
- Corydon
 - Service to Medical Complex.
- Lanesville
 - Sludge treatment from Berkshire WWTP. New revenue source for Lanesville.
 - Joint project to provide sewer service to interchange.

Stormwater Initiatives

- Section 205(j) Indian Creek Watershed Planning Grant
 - Indian Creek Watershed
 - Completed in 2008/2009
- Section 319 Implementation Grant
 - Demonstration projects at schools.
 - Unsuccessful in numerous attempts to secure grant.
 - County provided funding for projects in 2012.

Lanesville & South Central Schools Demonstration Projects

- Grant funding: Several attempts made to secure grant funding from State/Federal level.
- Sept 2012 – Funding approved by County (\$89,500)
- Project completed in 2013.



Lanesville Schools Demonstration Project



Lanesville Schools Demonstration Project Signage

Why Is It Important?

When it rains, water runs across buildings, roadways, and other surfaces before being absorbed by the earth. Catch basins in the parking lot collect runoff that is carried to the drainage collection system. When something spills on the ground, it gets washed into our creeks, lakes, and rivers.

A Solution To Pollution At Lanesville Schools

If It's On The Ground, It's In Your Water!

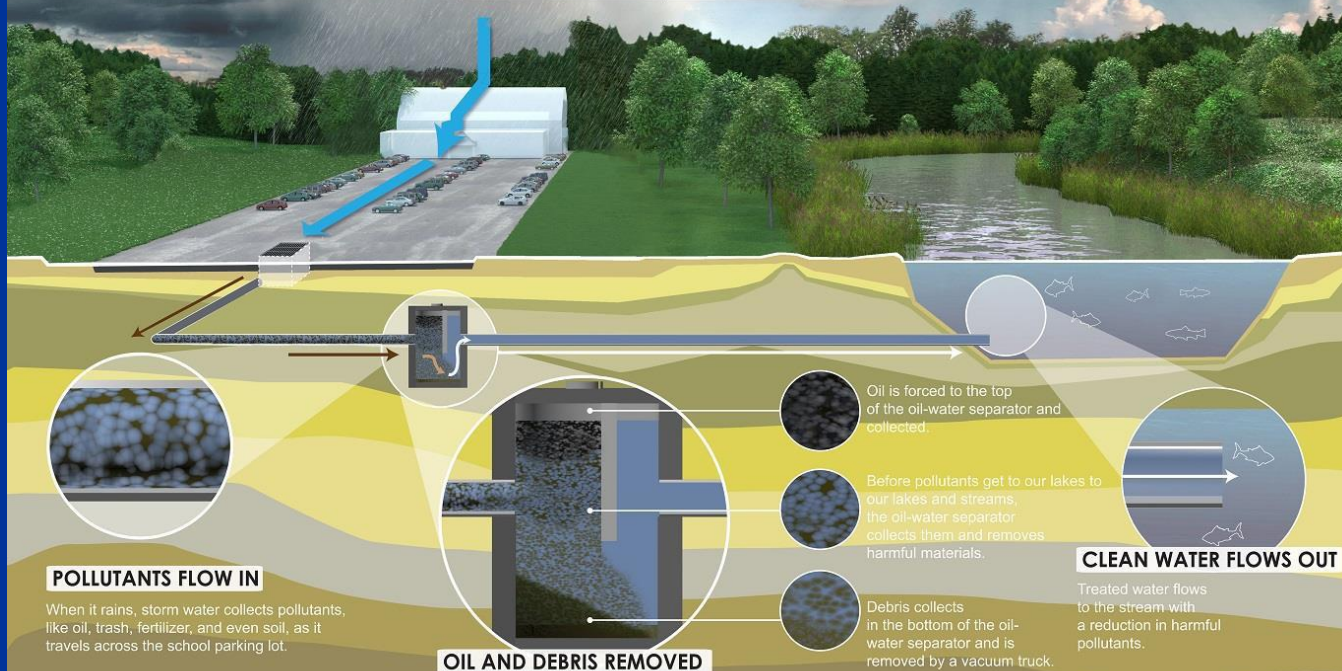
Beneath Your Feet...

A device called an Oil-Water Separator is helping to reduce pollution at your school and improve the environment.

What Can I Do To Help?

To help keep our waterways clean – at school, home, and work:

- Always throw your trash into bins
- Make sure your vehicle isn't leaking any fluids
- Properly dispose of used oil during vehicle maintenance
- Don't over-apply fertilizer and herbicides; and don't apply fertilizer before it rains
- Prevent erosion – sediment and soil are also pollutants



Through their dedication to water quality, the following organizations were involved in the completion of this project in 2013. Visit www.HCRSD.com



South Central High School Rain Garden



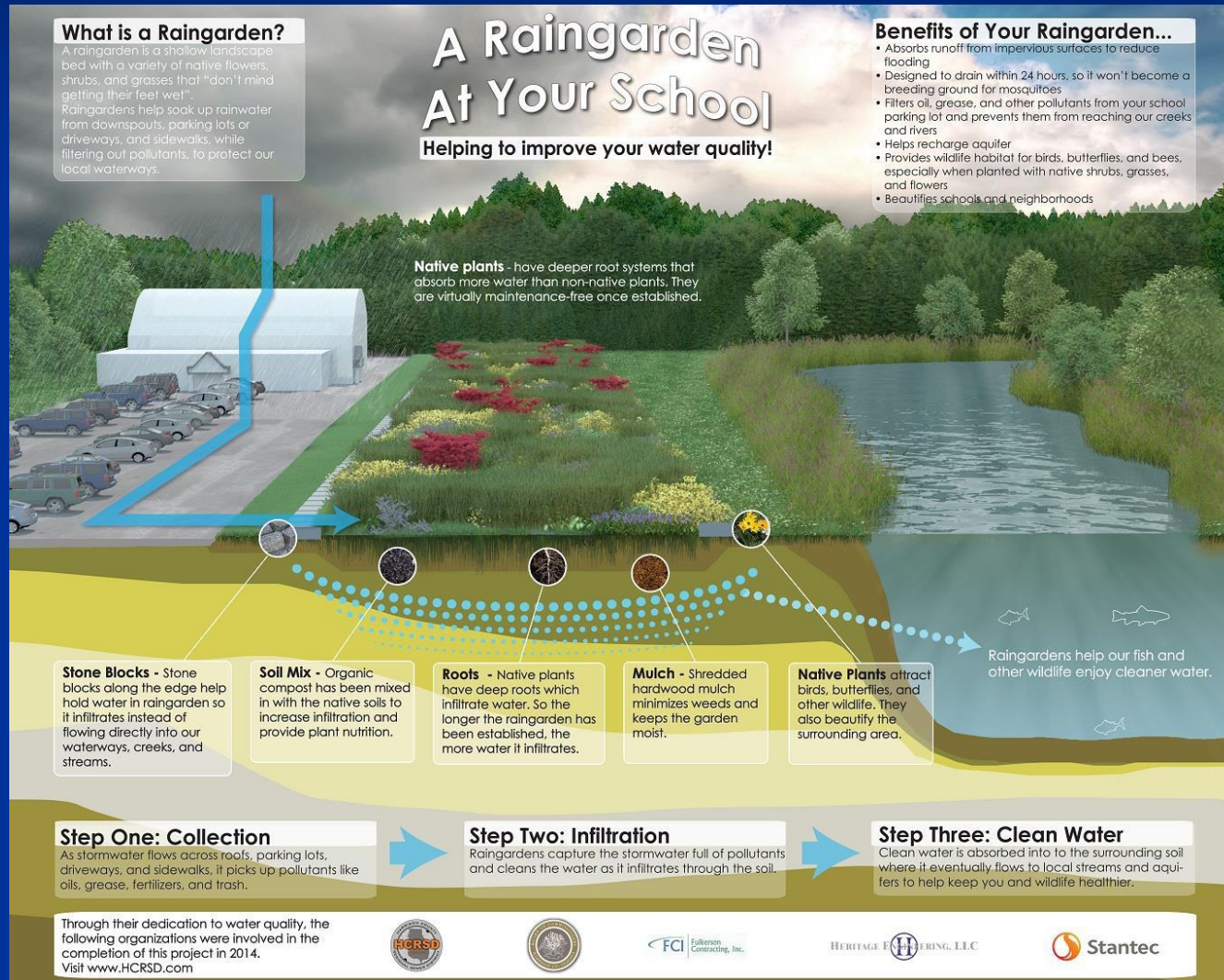
South Central High School Rain Garden



South Central High School Rain Garden



South Central High School Rain Garden Project Signage



Sanitary Sewer Initiatives

- Medical Complex
 - *Hospital, Medical Office Bldg, EMS Bldg*
- Berkshire WWTP
 - *District owns and operates WWTP.*
- New Salisbury Sewer Project
 - *Provides service to 19 commercial properties and mobile home park. Awaiting Dollar General connection.*
- Lanesville Interchange
 - *Provides service to the north and south sides.*

Medical Complex

- New pump station constructed that is owned by Town of Corydon.
- Customers:
 - *Hospital*
 - *Medical Office Bldg.*
 - *EMS Bldg*
- Allows for future expansion to serve other areas.

BERKSHIRE WWTP



Berkshire WWTP

- District acquired WWTP from SSK Development on April 1, 2008
- Agreement included \$75,000 payment to District
- Capacity: 30,000 gpd
 - Mobile Home Park is using 16,000 gpd
 - 14,000 gpd is available for future flow
- Agreed Order
 - Installation of EQ Tank (District)
 - Closure of Lagoon (SSK)
 - Elimination of I&I from Collection System (SSK)

Berkshire WWTP

■ Summary of Improvements

- Total Cost: Approx. \$45k (*Funded from cash received with acquisition of WWTP.*)
 - Repaired Digester Walls
 - Replaced Air Piping
 - Repaired and moved Blowers
 - Calibration of Flow Meter and Installed new Wier
 - New Influent Bar Screen
 - Handrail installed (safety)
 - Piping, electrical, chlorine feeds, and other improvements.

Berkshire WWTP

Pictures of WWTP

Before versus After

Berkshire WWTP

■ Existing Site

Before



After



Berkshire WWTP

■ Before

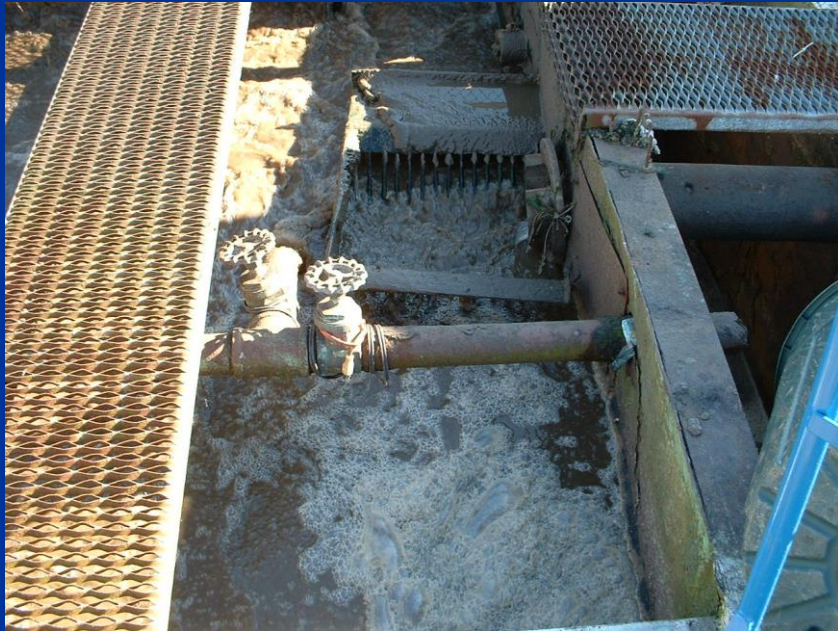


■ After



Berkshire WWTP

■ BEFORE



■ AFTER



Berkshire WWTP

- SSK made repairs to eliminate infiltration



Berkshire WWTP

- Agreed Order (Progress)
 - As a result of improvements made by the District the EQ Tank is no longer required. (IDEM letter dated Sept. 24, 2008)
 - Lagoon Closure: SSK closed lagoon in 2012.
 - Collection System: SSK continues to make improvements as necessary to remove I&I.

Emergency Generator

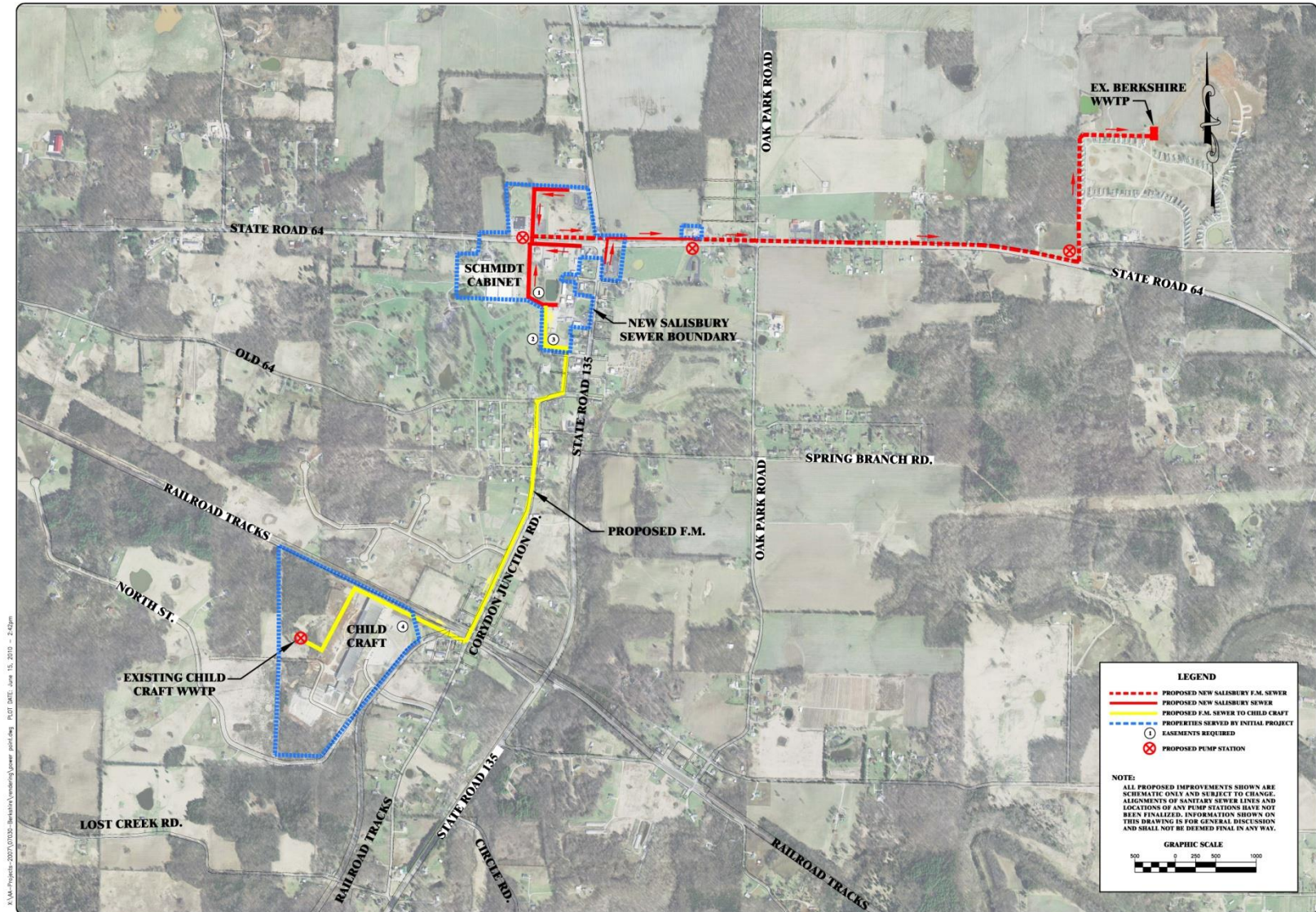
- Harrison County Government granted District funds to purchase mobile generator.
- Generator is available for others to utilize.



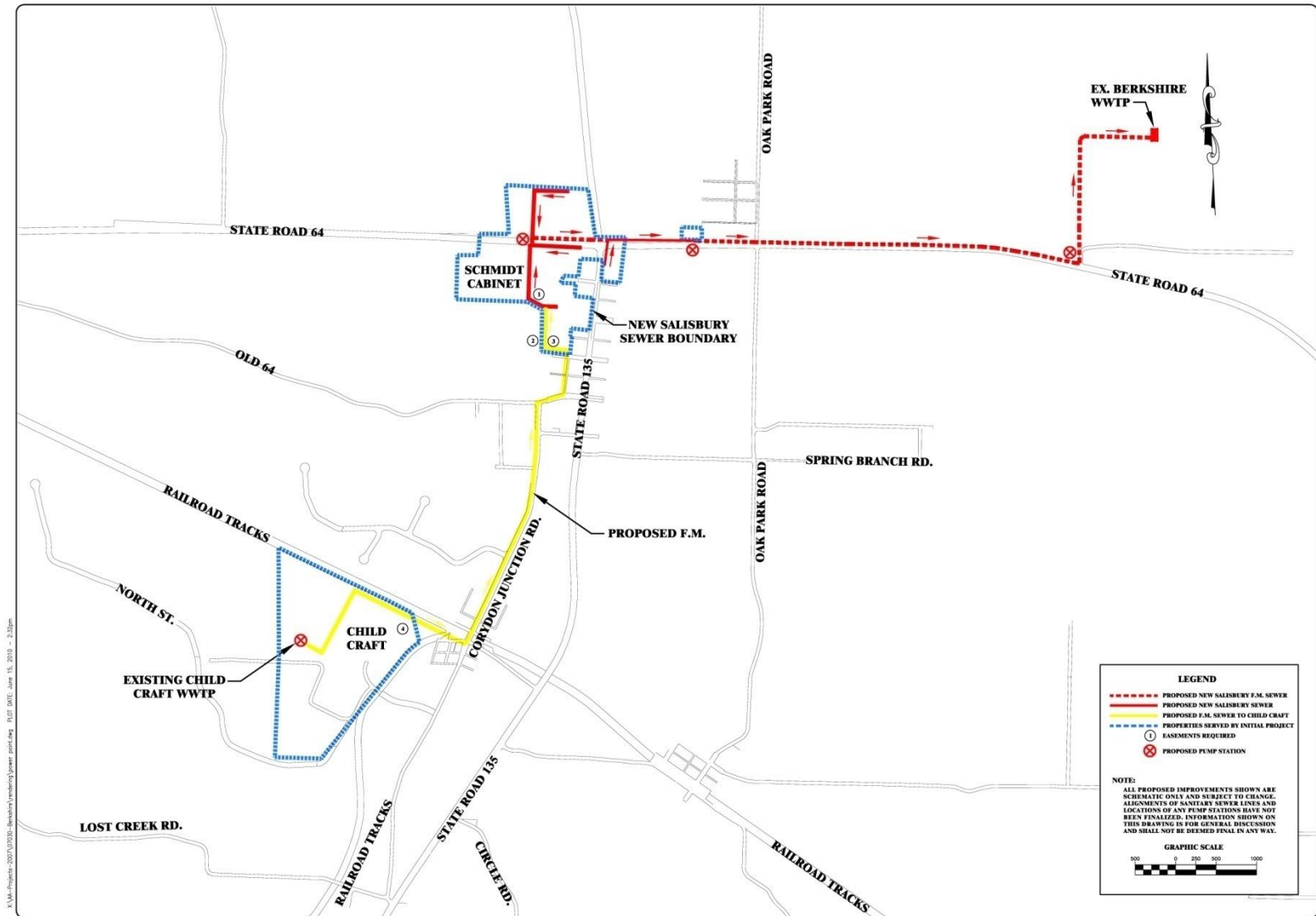
New Salisbury Project History

- 2006/2007: District began looking at options for providing service to the New Salisbury Area.
- April 2008: District Acquired Berkshire WWTP
- 2008: Repairs made to existing WWTP
- Sept 2009: HCCF granted funds for preliminary design efforts. Allowed District to prepare project for voting.
- Oct. 2009: District applies for \$1.1M EDA Grant.
- Nov 2009: New Salisbury business owners voted in favor of sewer service (19 commercial properties).
- June 2010: EDC agreed to allow District to utilize funds to proceed with Design to get Project shovel ready.
- Sept 2011: District awarded EDA Grant.
- June 2014: Construction completed.

New Salisbury Project



New Salisbury Project



New Salisbury Project

- Why did we look at New Salisbury first?
- Project Benefits
 - Eliminates Failing Systems in the Area
 - Schmidt Agreed Order
 - Lagoon
 - Shared Mound System
 - Shared Septic Systems/Lateral Fields
 - Allows for continued business growth in area
 - Allows for expansion of system to serve others at a more economical cost

New Salisbury Project Details

- Serves 20 Commercial Properties plus Berkshire
 - Currently 11 customers out of 21 connected.
- Includes service to Child Craft
- Allows for development of adjoining tracts.
- WWTP capacity increased to 60,000 gpd
- Lines sized to accommodate future growth.
- Eliminates Failing Systems in the Area
- Total Cost = \$2.1M

New Salisbury Project Benefits

- Economic Development Potential
 - Provides sanitary sewer service
 - Allows for undeveloped/vacant parcels to be developed
 - Allows for expansion of existing businesses
 - Opens up the area for other types of businesses to move into the area
 - Allows District to aggregate flow – 1st step towards a Regional WWTP

New Salisbury Project Benefits

■ Additional Benefits

- Infrastructure being installed is the base work needed for future expansion to serve others in the area.
- Allows nearby residential customers to petition for service (if requested by property owners)

New Salisbury Project

Project Budget

Design

| | |
|---------------|------------------|
| Survey | \$ 30,000 |
| Prelim Design | \$ 25,000 |
| Final Design | \$135,000 |
| Esmt Plats | <u>\$ 10,000</u> |
| | \$200,000 |

Construction

| | |
|-------------------|-------------------|
| Collection System | \$1,675,000 |
| WWTP Expansion | <u>\$ 250,000</u> |
| | \$1,925,000 |

| | |
|-------|-------------|
| Total | \$2,125,000 |
|-------|-------------|

New Salisbury Project Funding

| | | |
|---------------------------|--------------------|--------------|
| District Funds | \$138,500 | |
| User Fees from Owners | \$95,000 | (\$5k/Prop.) |
| EDC Funds | \$95,000 | |
| HCCF Grant | \$65,000 | |
| County Gov. (Grant Match) | \$670,000 | |
| EDA Grant (50%) | <u>\$1,062,500</u> | |
| | \$2,125,000 | |



Before & After



Before & After







Lanesville Interchange

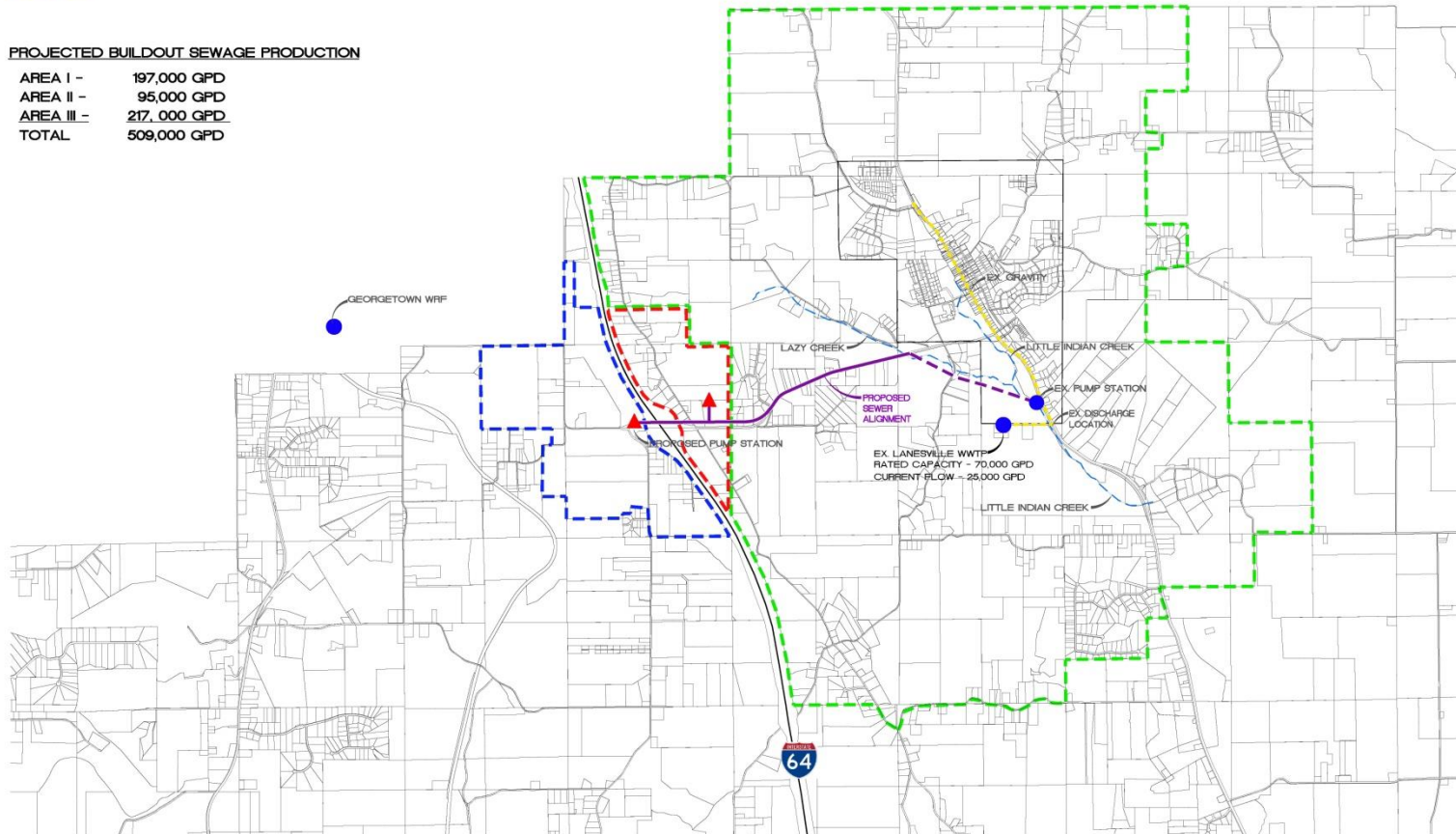
- County funded project.
- Currently have no customers connected.
- Areva is currently served by on site system.
- Sized to handle full buildout on both sides.
- All flow is treated at the Lanesville WWTP.
- District performs monthly maintenance.
- Project completed August 2015.

Lanesville Interchange

| LEGEND | TYPE | L.F. +/- |
|--------|--|----------------|
| | PROPOSED SEWER ALIGNMENT | F.M. / GRAVITY |
| | AREA I - TOWN OF LANESVILLE SERVICE LIMITS | 14,000 |
| | AREA II - LANESVILLE INTERCHANGE SERVICE LIMITS | |
| | AREA III - HARRISON COUNTY SEWER DISTRICT INTERCHANGE SERVICE LIMITS | |

PROJECTED BUILDOUT SEWAGE PRODUCTION

| | |
|------------|-------------|
| AREA I - | 197,000 GPD |
| AREA II - | 95,000 GPD |
| AREA III - | 217,000 GPD |
| TOTAL | 509,000 GPD |



| Revision | Date | Description | Drawn by | Checked by | Approved by |
|----------|------|-------------|----------|------------|-------------|
| | | | | | |

HERITAGE ENGINEERING, LLC
 100 N. 2nd Street, Suite 200
 Harrison, IN 47112
 (317) 281-8800
 (317) 281-8801

HARRISON COUNTY
 REGIONAL SEWER DISTRICT
 300 N. CAPITOL AVE.
 CORYDON, IN 47112

PROJECT: LANESVILLE INTERCHANGE SEWER
 SERVICE OPTIONS
 CONCEPT PLAN

JOB NO:
 HORIZ. SCALE: 1"=1500'
 VERT. SCALE: N/A
 DESIGNED BY: RLW
 CHECKED BY: RLW
 DATE: MAY 2012

SHEET
 1
 of 1

c:\AI-Projects-2008\06048-Hendrix Co. Support\lanesville\GIS\lanesville interchange 3-30-12.dwg PLOT DATE: January 10, 2013 - 9:52am



Lanesville Interchange Lift Sta.



What's Ahead?

- New Salisbury Project:
 - *Continue adding customers (e.g. Dollar General)*
- Lanesville Interchange:
 - *Work with EDC to attract businesses.*
- Stormwater:
 - *Continue to discuss options with County for District involvement.*
- District Plan Update:
 - *Update current plan in 2016.*

Thank You

QUESTIONS ?

